

## IT Rental Services

IT & AV hire for events,  
short term projects and proof of concept



**STEVE SHELSHER**  
Sales Director  
T +44 (0) 2392 825925  
sshelsher@bell-integration.com

Our flexible rental solutions help you speed up the **provision of equipment to the people that need it, the moment they need it** – and wherever they may be located.

**Ideal for organisations that have short-term IT projects, where IT purchase is not a suitable option**

Our end-to-end solutions make it quick and easy to deploy whatever hardware is required in a cost-effective way. We enable you to deploy temporary solutions at a fixed and predictable monthly cost.

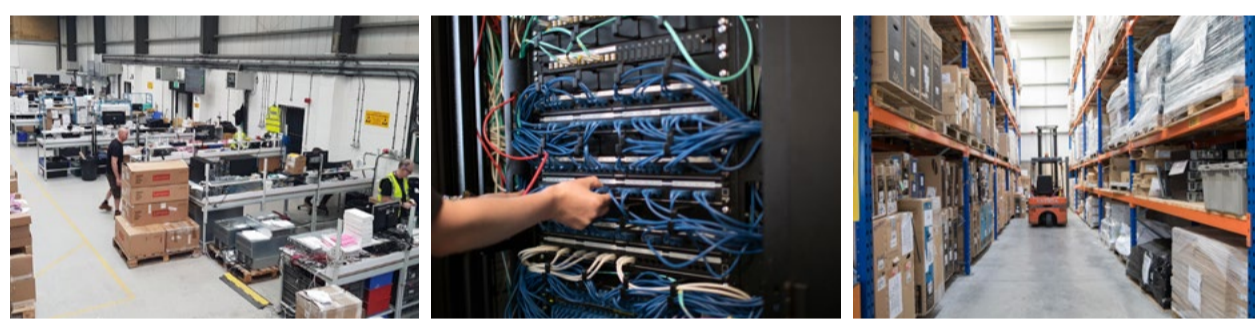
**Our great value IT & AV rental services are ideal for a range of scenarios, including:**

- **Proof of concept for IT infrastructure** – ensuring your new environment will suit your business needs
- **Evaluation programmes** – try before you buy to reduce purchase risk
- **Workload peaks** – provision laptops for temporary staff, or deploy extra servers for additional capacity
- **Remote working** - avoid overtaxing internal IT resources and avoid any laptop supply chain constraints. We can pre-build your laptops with your specified software and can ship directly to remote employees
- **Major events** – exhibitions, government elections, tournaments and international sport events
- **Server migration, visualisation or relocation** – provide swing kit to replicate existing environments and avoid any downtime of mission critical systems
- **Software testing and development** – hire servers to avoid compromising existing systems
- **Training courses and graduate programmes** – get up and running fast with additional touch screens, laptops, iPads or PCs that can be set up when and where they're needed
- **Disaster recovery** – mobilise IT solutions for a fast recovery from disruptive events such as fire, flooding or theft to assure business continuity

We even take care of handling all the logistics involved. Giving you **a single point of contact to manage everything** from configuration and testing through to delivery, installation, and collection.

### Why Bell Integration

A division of Bell Integration, Hamilton Rentals is the largest provider of IT rental solutions across Europe.



**Expertise** - Our secure, bespoke facility provides a complete configuration and testing service prior to shipping and, as a certified Microsoft partner, can pre-install any Microsoft operating system or application you require. Our qualified engineers are on hand to provide support on any hardware queries or issues you or your users have for the duration of your rental.



**Control** - Whatever your project is, our rental contracts and extensive fleet put you in control, giving you the freedom of choice, as well as the ability to return equipment early, extend the hire or even purchase the solution. You're also free to reserve kit and call down items as required.



**Financial benefits** - Rental allows you to pay for use rather than ownership and means you have access vital equipment when you need it at a predictable cost. Cash-flow and CAPEX budgets are preserved, improving company liquidity and productivity.

### A complete service

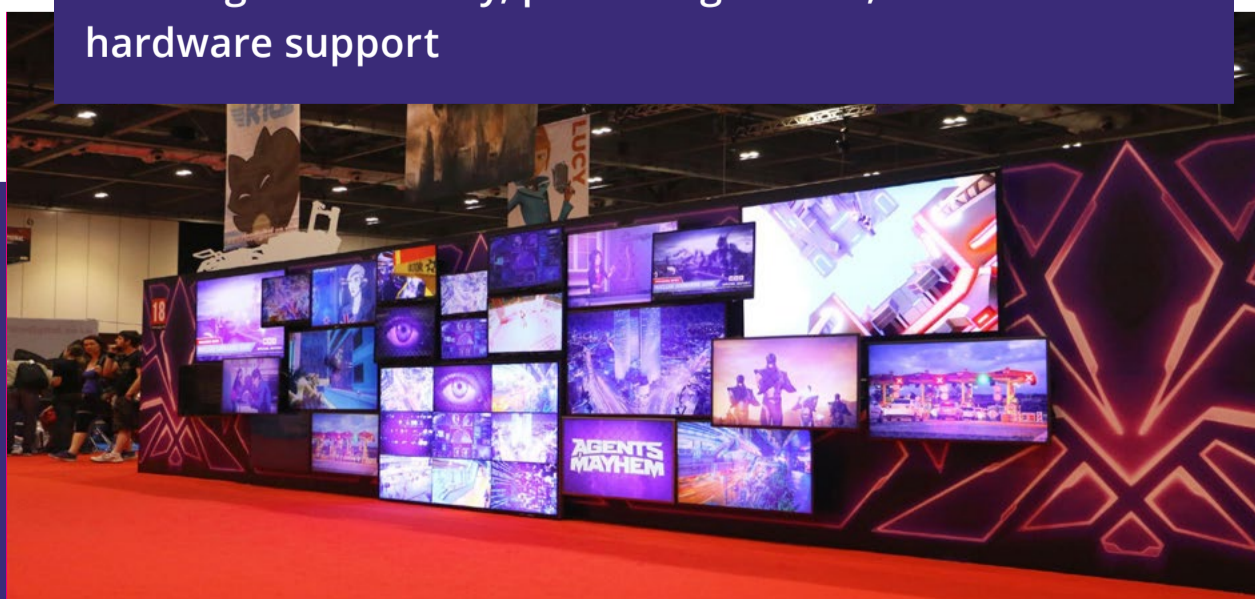
We can provide recommendations on the best products and models for your needs, take care of equipment set up and delivery and even manage your IT or AV installation.

Freeing your teams while ensuring everything runs as expected. At the end of your rental, we'll ensure secure data cleansing is undertaken as required and handle the timely pickup and collection of all returning assets.

Our extensive fleet includes:

- **Desktops, laptops and tablet PCs**
- **Servers and storage**
- **Monitors, TVs, LED screens and video walls**
- **Touch screens, interactive whiteboards, projectors and AV**
- **Printers, scanners and photocopiers**
- **Voting solutions and virtual reality headsets**
- **Mobile phones, networks and comms**
- **Fever and temperature scanning devices**

Offering fast delivery, pre-configuration, installation and hardware support



### Contact us

From offices in London, Portsmouth, Wokingham, Krakow, Hyderabad and Singapore, we work with local and global customers across Europe and Asia-Pacific to streamline every aspect of their IT management strategies to maximise efficiencies and increase their ROI, year on year.

See how Bell Integration can help your business succeed.

Please contact us on [marketing@bell-integration.com](mailto:marketing@bell-integration.com) or visit

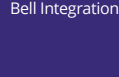
[www.bell-integration.com](http://www.bell-integration.com)



LinkedIn:  
bell-integration



Twitter:  
@BellIntegration



YouTube:  
Bell Integration